

LONDON BOROUGH OF SUTTON

THE EXECUTIVE

MONDAY, 16TH FEBRUARY, 2009



7.30 pm at the

Civic Offices, St Nicholas Way, Sutton SM1 1EA

To all members of The Executive:-

Chair: Councillor Sean Brennan
Vice-Chair Councillor Ruth Dombey and Councillor Colin Hall
Councillors: John Drage, Tony Brett Young, Lyn Gleeson, Colin Stears and Graham Tope

Please note that, for reasons of economy and sustainability, large appendices and strategy documents are circulated to Executive Members only. Hard copies are available on request to Sue Sheppard at the contact numbers shown below: the documents are also viewable on the Council's website at www.sutton.gov.uk

*Paul Martin
Chief Executive
Civic Offices
St Nicholas Way
SUTTON
SM1 1EA*

6 February 2009

Enquiries to: Sue Sheppard, Principal Committee Manager. Tel. 020 8770 5116
email sue.sheppard@sutton.gov.uk

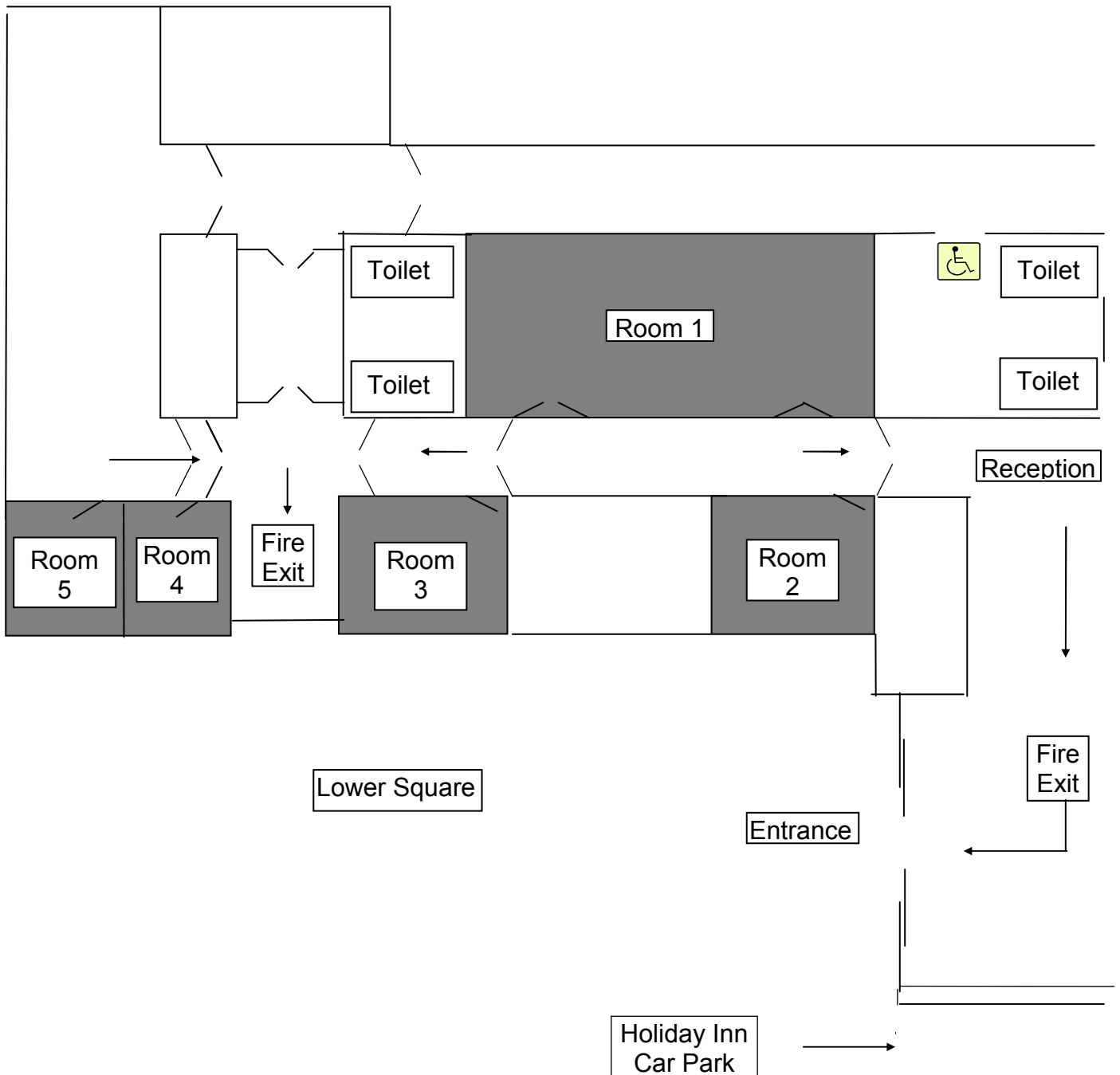
Copies of reports are available in large print on request

**CIVIC OFFICES, SUTTON
GROUND FLOOR MEETING ROOMS**

FIRE PRECAUTIONS

If there is a FIRE in the building the fire alarm will sound continuously. Leave the building immediately by the most direct route, either back through reception or the fire exit into Lower Square. Take your coat and any bags with you. Assemble in the car park in front of the Holiday Inn.

First Aid can be obtained from Civic Security in reception.



Reminder – Declaration of Interests

Members should consider the following interests and whether they have any they should declare.

Personal interests:

Where it might reasonably be regarded that a matter will affect the well-being or financial position of you, a member of your family, any person with whom you have a close association, or any person or body with which you or they are involved or in which they have a relevant beneficial interest, to a greater extent than the majority of people affected by the decision.

In this case you should declare the interest and state the nature of it.

Personal and Prejudicial Interests:

Where a personal interest is thought to be so significant that a member of the public, with knowledge of the facts, would consider it likely to prejudice the member's judgment of the public interest.

In this case you should declare the interest, state the nature of it, and leave the meeting room.

Further information can be found in the Council's Code of Conduct. If you are in any doubt as to whether you have an interest you should seek advice before the Committee meeting from either Richard Shortman or Stephen Lawrence-Orumwense.

If, during the course of the Committee meeting, you consider you may have an interest you should always declare it.

PLEASE NOTE: *Decisions taken at this meeting do not become definitive until 10am on 18 February 2009. Any four members of the Council may notify the Chief Executive by then that they require a decision to be reviewed by full Council at its next meeting on 2 March 2009, or by another council committee. Please contact the Committee Manager named on the Agenda frontsheet for further information.*

AGENDA

- 1. APOLOGIES FOR ABSENCE**
- 2. MINUTES OF THE PREVIOUS MEETING**

Minutes of the meeting held on 3 February 2009 (To Follow)

STRATEGY AND POLICY

3. REGENERATION OF ELIZABETH HOUSE SHELTERED HOUSING SCHEME (Pages 1 - 44)

To report the outcome of a feasibility study into refurbishment of the sheltered housing compared to redevelopment

This reported was deferred from 3 February 2009 meeting, and is being recirculated for ease of reference

Ms Ann Culley will address the meeting on behalf of a deputation, under the provisions of Standing Order 10

4. BUDGET 2009/10 AND ASSOCIATED MATTERS (Pages 45 - 114)

To consider and recommend the budget for 2009/10 to full Council for approval

The Revenue Estimates 2009/10 pages are being circulated, to Members only, as a separate document

5. ORCHARD HILL - COMPULSORY PURCHASE ORDER (CPO) OF ACCESS LAND (Pages 115 - 128)

To recommend full Council to make a CPO to acquire the land needed for the access to the new Stanley Park High School

6. DEVELOPMENT OF WANDLE VALLEY REGIONAL PARK (Pages 129 - 138)

To report progress and agree future working arrangements involving this Council as part of the Wandle Valley Partnership

7. ANNUAL REVIEW OF THE CONSTITUTION (Pages 139 - 150)

To recommend to full council any changes to the Constitution following the annual review

Recommendations of the Community Leadership Advisory Group (3/2/09) (To Follow)

OPERATIONAL MATTERS

8. REFERENCES FROM SCRUTINY OVERVIEW COMMITTEE (Pages 151 - 152)

9. REFERENCE FROM PLANNING ADVISORY GROUP (10/2/09)

Core Planning Strategy Submission Report – results of consultation and proposed changes to the draft document (To Follow)

10. SUTTON CENTRAL LIBRARY (Pages 153 - 158)

Proposal to enter into a partnering agreement with the Sutton College of Learning for Adults (SCOLA) to run the Coffee Shop at Sutton Central Library

- 11. ANY URGENT ITEMS, BROUGHT FORWARD AT THE DIRECTION OF THE CHAIR, WHO HAS AGREED THE REASON FOR URGENCY**